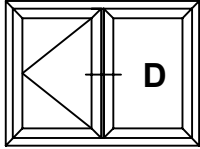
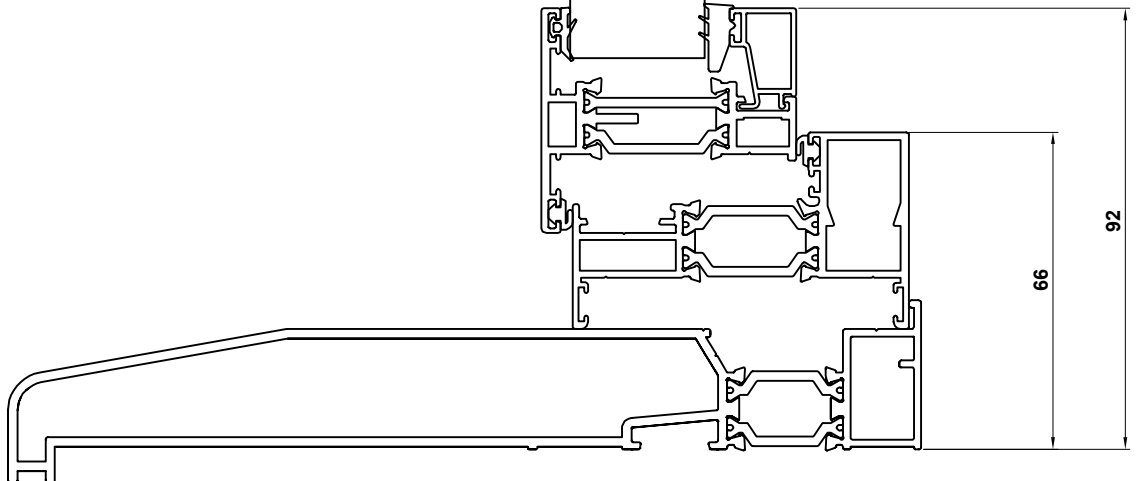
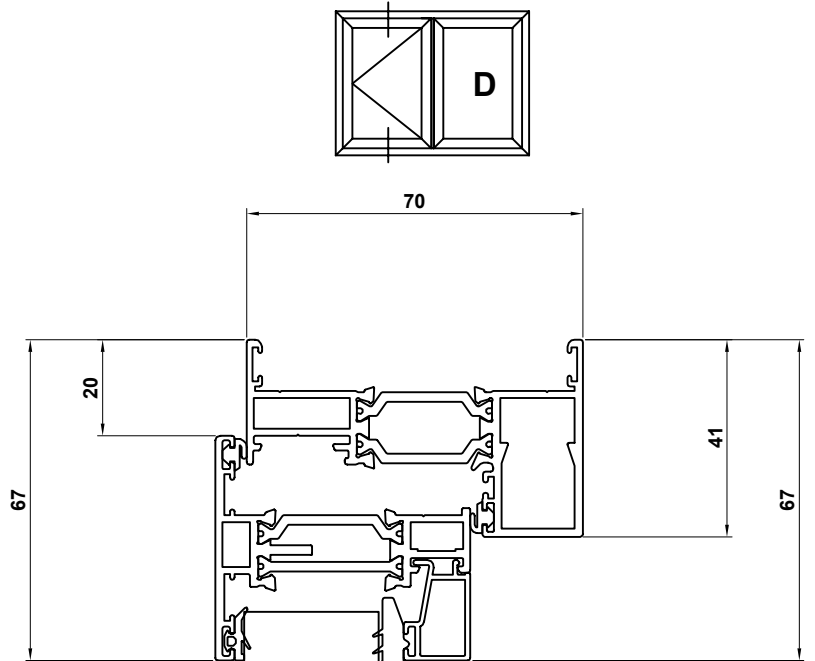
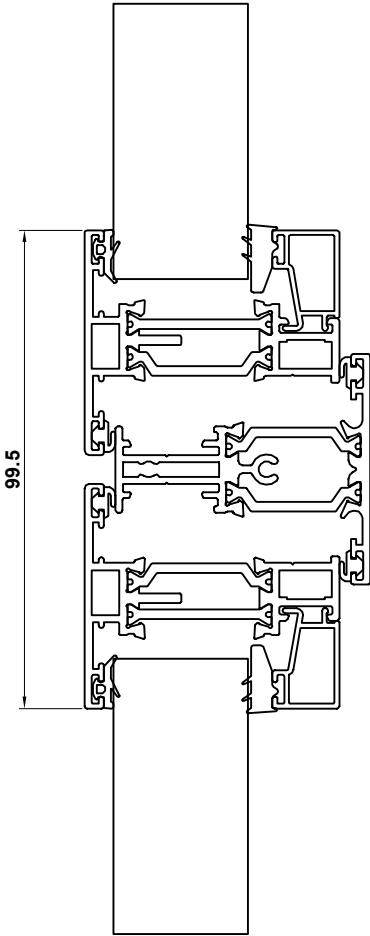


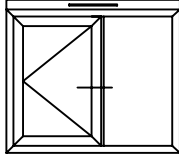
**ALITHERM 300 CASEMENT SYSTEM 1 ASSEMBLY DRAWINGS  
CONTEMPORARY FRAME INTERNALLY GLAZED  
FLAT SASH**



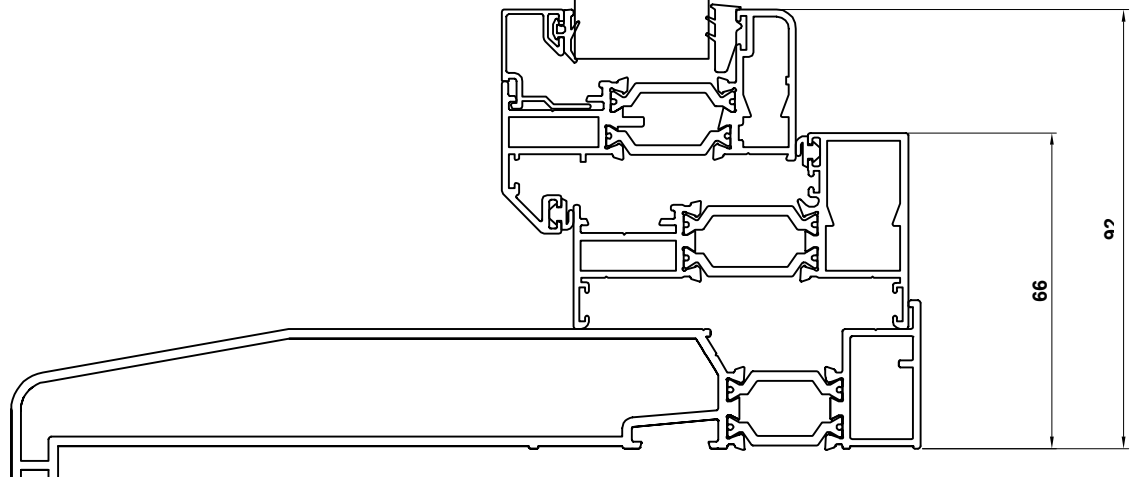
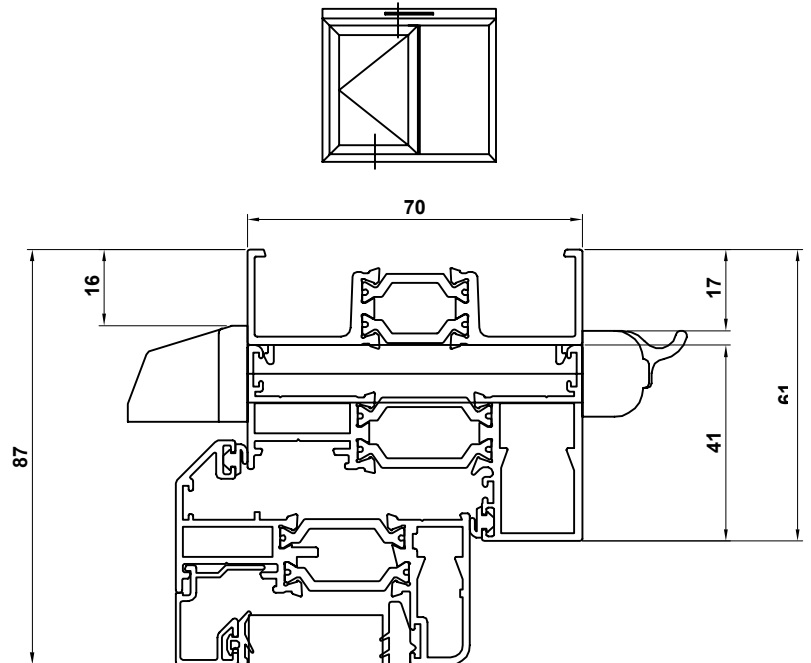
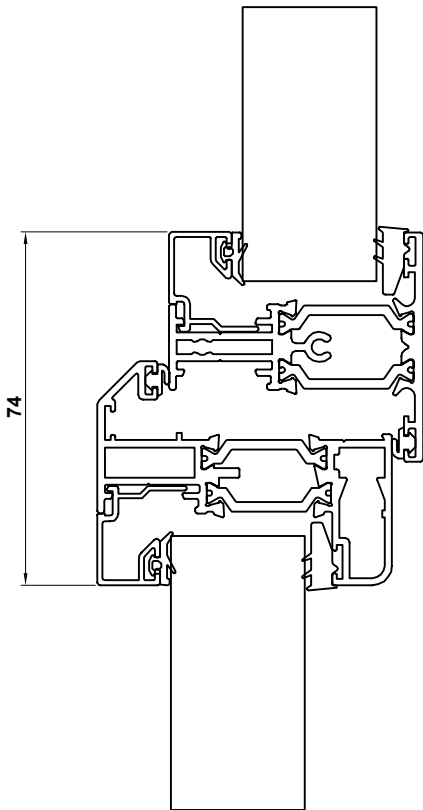
- ZSB169** - Outer Frame
- ETC324N** - T Sash
- ETC333** - T Transom/Mullion
- ETC367** - 28mm Glazing Bead
- ETC458** - 190mm Cill



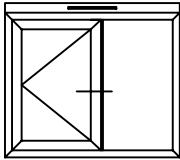
**ALITHERM 300 CASEMENT SYSTEM 2 ASSEMBLY DRAWINGS  
CONTEMPORARY FRAME EXTERNALLY GLAZED  
BEVELLED SASH**



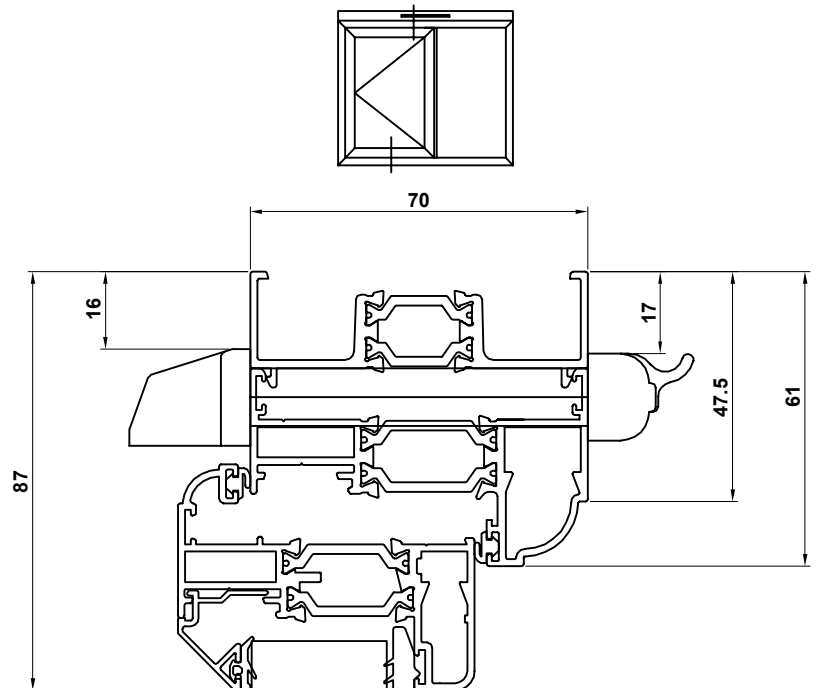
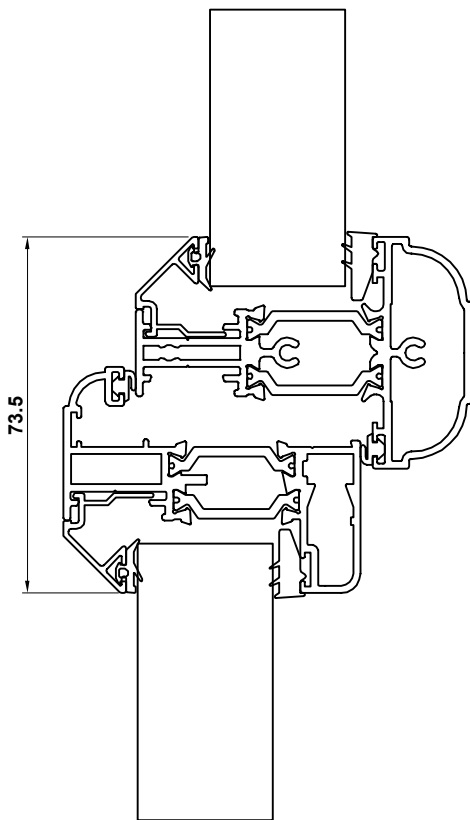
- ZSB169** - Outer Frame
- ETC321N** - Z Sash
- ETC333** - T Transom/Mullion
- ETC371** - 28mm Glazing Bead
- ETC458** - 190mm Cill
- DV559** - Outer Frame Extension



## ALITHERM 300 CASEMENT SYSTEM 5 ASSEMBLY DRAWINGS CLASSIC-AL FRAME EXTERNALLY GLAZED FEATURED SASH



- ZSB168 - Outer Frame
- ETC327 - Z Sash
- ZSB167 - T Transom/Mullion
- ETC375 - 28mm Glazing Bead
- ETC458 - 190mm Cill
- DV559 - Outer Frame Extension



**Note:**  
For floating mullion applications, the Classic-Al mullion ZSB167 will need to be replaced with the contemporary mullion ETC333

